

Box Turning Basics: References

For a ZVW Presentation on May 30, 2013, by Irv Miller

ZVW Library References

Turned Boxes - A 3 DVD Set	Ray Key	DVD 1: The Basic Box DVD 2: The Capsule Box DVD 3: The Finial Box
Turning Boxers and Other Projects	Bonnie Klein	Volume III of a 3 volume set of DVDs
Turn It Up - A 3 DVD Set	Jimmy Clewes	DVD 2: Lidded box from Box Elder with a chattered Ebony insert.
Turning Wood	Richard Raffan	Video Tape including details of end grain turning and a domed box project.
Taunton's Complete Illustrated Guide to Turning	Richard Raffan	Pages 146 to 145: <i>End-Grain Hollowing and Shaping</i> Pages 167-169: <i>Box</i>

Internet Reference

http://www.woodturningonline.com/Turning/Turning_content/Turning_End_Grain_Box.pdf

Notes on Hollowing

Jimmy Clewes uses a parting tool as a scraper, a blunt angled bowl gouge (preferably from outside toward the center), and a straight chisel (90 degree skew) as a scraper for hollowing.

Bonnie Klein uses a fingernail grind spindle gouge, sometimes from the outside toward the center, sometimes from the center outward, and scrapers for hollowing. She also uses a blunt angle spindle gouge and no scraper for her acorn box hollowing.

Richard Raffan uses a blunt angle spindle gouge and scrapers, or scrapers only, for hollowing after drilling a depth hole.

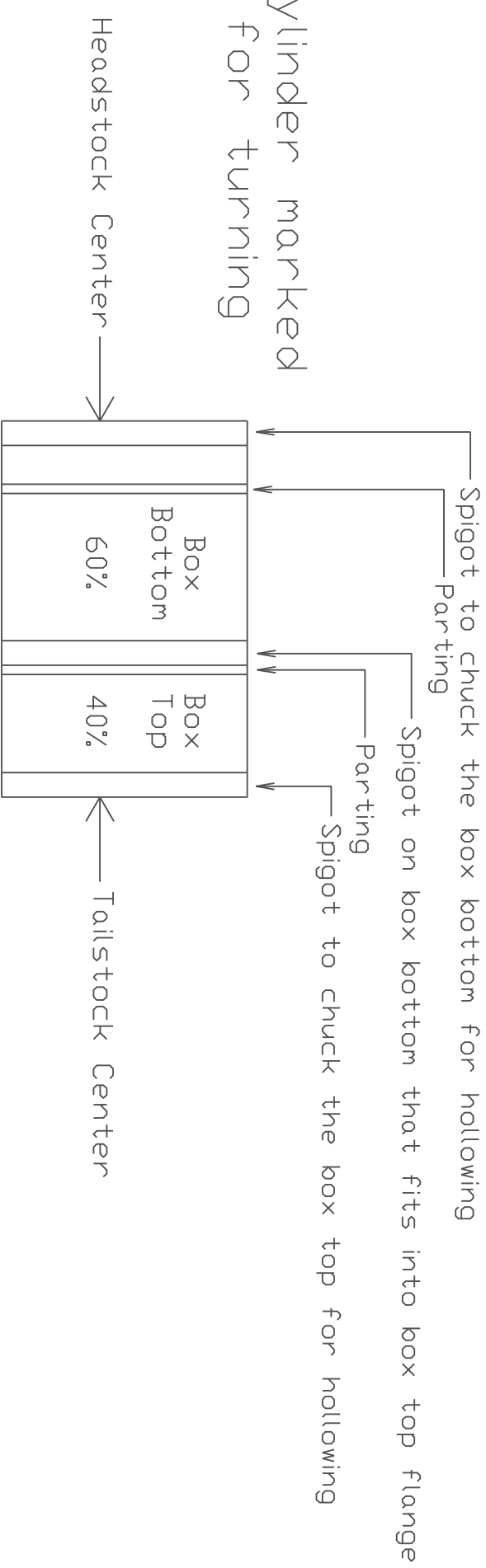
Ray Key uses a blunt angled spindle gouge that he first uses as an auger to drill a hole in the center, then uses as a gouge to hollow from the hole outward. He finishes hollowing with a scraper.

Box Turning Basics: Order

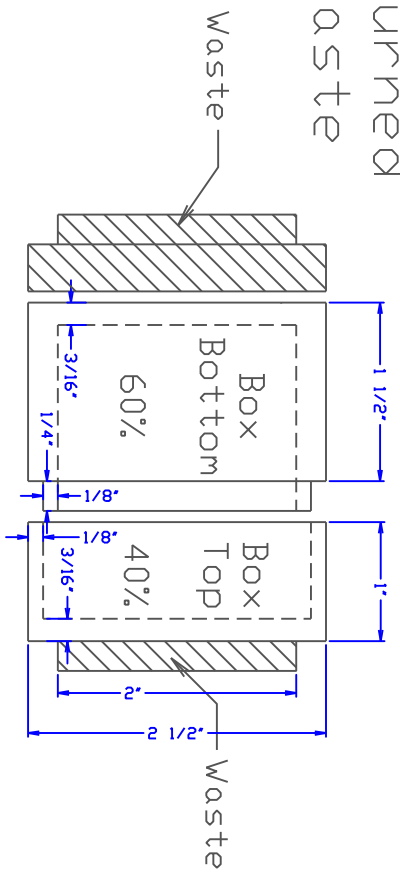
For a ZVW Presentation on May 30th, 2013, by Irv Miller

- 1. Rough turn a blank to a cylinder.**
- 2. Turn tenons=spigots on each end for chucking.**
- 3. Part off the lid from the base.**
- 4. Chuck the lid**
- 5. Touch up the lid cylinder and square off the end with a very slight undercut.**
- 6. Hollow the lid, making sure that the flange that will contact the base is parallel with the lathe axis.**
- 7. Sand and finish the inside of the lid to completion.**
- 8. Remove the lid from the chuck**
- 9. Chuck the base.**
- 10. Touch up the base and square off the end.**
- 11. Turn the tenon on the base for the lid, fitting the lid to a tight fit.**
- 12. Hollow the base, making sure that the inside of the rim is parallel with the lathe axis. This is necessary for reverse chucking in a jam chuck.**
- 13. Sand and finish the inside of the base to completion.**
- 14. Place the lid on the base and turn the box to the desired style.**
- 15. Start a parting cut for the bottom of the base.**
- 16. Sand and finish the box, with the exception of the box bottom, to completion.**
- 17. Fine tune the lid fit.**
- 18. Remove the lid.**
- 19. Part off the base.**
- 20. Reverse chuck the base in a jam chuck.**
- 21. Turn the base with a concave surface.**
- 22. Sand and finish the base.**

Cylinder marked
for turning



Resulting turned
box and waste



BOX BASICS

Irving Miller, ilm
4/22/2013 7:20 PM
Turned Box Anatomy.dwg